

Release Notes

imc Learning Suite

Release Notes

imc Learning Suite

Author: Dowell Izedonmwen

Date: 04.04.2023

Document	Description
Version	ILS 14.16
Status (Draft / Review / Finalisation)	Finalisation
Contact person(s)	Product Management Team

History	Status	Who
29.03.2023	Draft	Dowell Izedonmwen
31.03.2023	Review	Nadine Gohr
04.04.2023	Finalisation	Marion Sander-Feld Dowell Izedonmwen

Content

1	Feature Highlight	4
1.1	Role-Specific Learning Analytics Dashboards/reports	4
1.2	Feedback Collection Analysis	4
2	Details in imc Learning Suite 14.16	6

1 Feature Highlight

1.1 Role-Specific Learning Analytics Dashboards/reports

It is possible to configure role-specific Learning Analytics dashboards/reports as a navigation item.

Values delivered

- The user would be able to access the reports/dashboards quickly that he would need to monitor frequently.

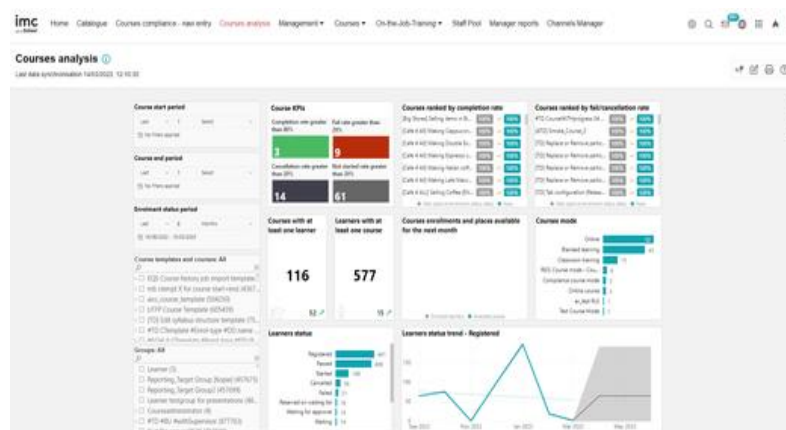


Figure 1.1: Example of Dashboard

1.2 Feedback Collection Analysis

This report evaluates the feedback collection and submission of the courses. Only default feedback and transfer feedback forms are in scope. Event feedback forms are out of scope (obsolete).

Learning paths are out of scope.

Values delivered

- The reporter has good amount of data on the basis of which he can evaluate how the courses are performing and increase learner satisfaction.

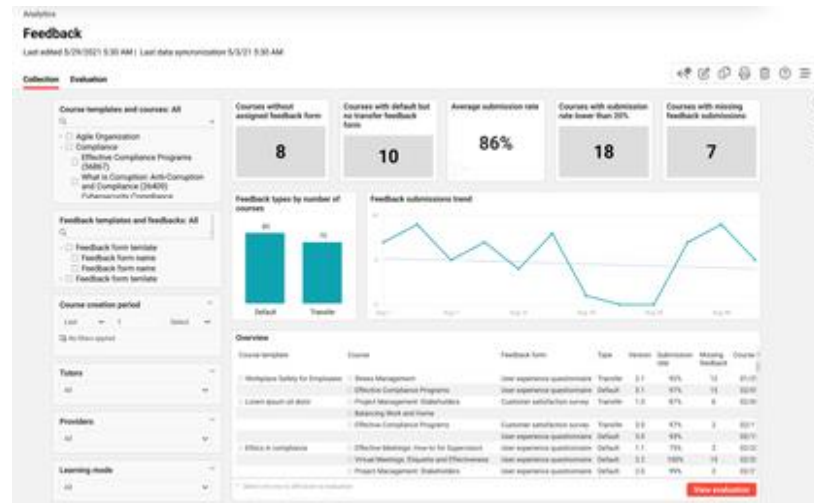


Figure 1.2: Feedback collection analysis

2 Details in imc Learning Suite 14.16

Of course, there is even more to discover. Additional enhancements that will continue to improve the experience of learning and learning management with imc products are described below.

Product Area	Feature	Version	Migration (script) needed for existing objects	Configuration	Description, Use Case and Benefit
Learning Path	Mail Monitor	14.16	No	No	In the Learning path manager now a mail monitor is available. This is implemented analogue to the one already existing in the Course manager. At the moment the mail monitor only shows booking mails, because we don't have learning path specific notifications. Those will be implemented in one of the next IPs.
Learning Path	Automatic Cancellation from Waiting list	14.16	No	No	The already existing metatag which was available for course is now also available for learning paths. Prerequisites: The Learning path must have a start and an end date, also the learning path is fully booked and users are on the waiting list. The cron job was adapted, so that this job now cancels the users from the waiting list at the start date
Learning Path	Performance	14.16	No	No	Trying to decrease the loading time for learning paths. The data will be shown asynchronously, as it is coming from the API. That means that in the beginning the header will be loaded without the information related to contents and a spinner will be shown to suggest that something else is coming. When the contents load, the header will be updated with the additional information.

Learning Path	Design change for certificate download on learning path level	14.16	No	No	A new design label will be displayed in ILP when finalizing a level in a level-based learning path, if configured, so that the learners know which level has been achieved and which one they can get a certificate from.
Learning Path/ Courses	Structuring of Description page	14.16	No	No	<p>On the tab "Metatags and attributes" of Course type, course template, learning path type and learning path template it is now possible to configure the folders to be visible as headlines in frontend on the description page.</p> <p>All Metatags which are set to visible even if the folder is not visible will show. For the folders we have the options to be shown expanded or collapsed.</p>
Courses	Integration of Baidu map	14.16	No	Configuration manager / Render map link https://map.baidu.com/search?querytype=s&da_src=shareurl&wd={location}	This setting in configuration manager allowed to embed baidu map in course description
Record external courses	Display skills on External Courses	14.16	No	Display skills checkbox needs to be marked as true (Analogue to Certifications and Certificates) in the course creation workflow in the Additional Information step.	<p>When creating external courses, the learner can now add, besides certification and certificates, skills for course which have been done in the past. These skills, alongside certifications will be added to the competency page for the learner who created it.</p> <p>The external course can be created with or without supervisor approval. In the second case, a further verification will be needed and the certificate which has been previously added by the learner can be reviewed by the supervisor from the Registration enquiries page so that he/she can decide if the external course will be approved or declined.</p>

Learning status	Allow multiple keywords in search field	14.16	No	Configuration manager / Learning area	This setting in the configuration manager is used to decide system-wide whether users should be able to search for multiple keywords at once in the search field in learning status
Booking processes	Pre-Booking by supervisors	14.16	No	No	<p>On client level we changed the configuration option "Enable pre-booking by supervisor. The checkbox here is replaced by a selection. The values which can be chosen are:</p> <ul style="list-style-type: none"> • Do not enable • Always • Consider setting in course template
Calendar	Training schedule for supervisors and learners	14.16	No	Configuration manager / Training Calendar and two new standard navigation items to display the calendar for learners and supervisors	<p>Access a calendar in imc Learning Suite to see the scheduled trainings in a calendar view (day/week/month/year)</p> <ul style="list-style-type: none"> • Training-based view: Lists learning paths and courses for scheduled training with training name and type. It is possible to jump off to the course progress report of a training. • User-based view: Shows learners and their training schedule for trainings which are requested, confirmed, on waiting list, enrolled, in progress or completed. <p>Several filters will be provided to drill down on both views.</p>
SCIM API	Change on SCIM API - Content type	14.16	No	No	Our API is now compatible with the RFC 7644
Media	Forums: Show updates in course forums for new posts	14.16	No	No	<p>The users can now see if there are any updates in the course syllabus for forums. The participants can create new threads, add comments or reply to any of them. When these actions are done, it will also be reflected in ILP under an "Updated" tag so that the participants will know that there has been new activity which needs their attention.</p> <p>This functionality is analogue to the "Updated" tag for courses.</p>

Media	Prevent right click on videos	14.16	No	Configuration manager / Media access	This setting in the configuration manager is used to decide system-wide whether users should be able to right-click on videos. By right-clicking on videos, it is possible among other things to download them.
Media	Zoom Integration	14.16	No	No new configuration	Zoom can now be fully integrated via LTI 1.1
Tests	Classification s for Tests	14.16	No	On Classification manager, the Assignable Object Type section has been extended to support as well complete tests, besides tests question. The already existing checkbox needs to be checked to dispose the new functionality.	<p>With this new capability the users will now be able to classify complete tests, analogue to test questions.</p> <p>The already existing checkbox in the Classification manager is now extended to support as well complete tests.</p> <p>Moreover, a filter and a search are available for a more accurate search. will now be able to classify complete tests, analogue to test questions.</p> <p>The already existing checkbox in the Classification manager is now extended to support as well complete tests. Moreover, a filter and a search are available for a more accurate search.</p>
Skills in Job Profile	Skills display in Job Profile	14.16	No	No	<p>Previously when creating job profiles, the skills were moved in imc Learning Suite in a particular order, but they were not reflected in the imc Learning Portal in the same order.</p> <p>From now on, the order from imc Learning Suite will be similar to the one in imc Learning Portal.</p>
Test Questions	Display solution field when creating questions as formattable	14.16	No	No	With this improvement, the users can now format the text in the solution field, if they want to, when creating test questions.
Learning Analytics	System-defined person attributes	14.16	No	No	<p>The global system-defined person attributes are available in the imc Learning Analytics data model.</p> <p>The customer would be able to create Key Performance Indicators of his choice based on these personal attributes.</p>

Learning Analytics	Role-specific LA Dashboards/ Reports	14.16	No	Yes	It is possible to configure role-specific LA dashboards/reports as a navigation item so that the user is able to navigate to them quickly.
Learning Analytics	Feedback collection analysis	14.16	No	Yes	<p>This report evaluates the feedback collection and submission so that the reporter has good amount of data on the basis of which he can evaluate how the courses are performing and increase learner satisfaction.</p> <p>Only default feedback and transfer feedback forms are in scope. Event feedback forms are out of scope (obsolete). Learning paths are out of scope.</p>
Authentication	SSO via ADFS	14.16	No	Configuration / SAML Authentication / Identity Provider	<p>The used signature algorithm type can be defined now via configuration: SHA1, SHA256, SHA512</p> <p>Default value will stick to SHA1</p>
REST API	Process complexity information added	14.16	No	No	Course templates created via REST API consider now the process complexity tab info from course types
Event bus	New skill events for event bus	14.16	No	No	Additional event which contains the following data: Skill name, Skill ID, participant name, participant ID, reached Skill level of the participant, date of skill allocation, expiry date.
Security	Audit Loggin	14.16	No	Yes; Configuration manager item to enable/disable different aspects of the logging	<p>A set of security relevant events is now included in an additional audit log. This new log file is written to the standard logging directory and also available through the support backend.</p> <p>The audit events include logins (successes and failures), logouts, user data changes and user data exports, group memberships changes, access rights changes, password requests and changes by users in the Learner & Manager UI, report accesses and exports, and system configuration changes.</p> <p>In order to transfer the logged events, the connection to Elasticsearch / OpenSearch has been extended to allow multiple targets, so that the audit log can be shipped to a different server in contrast to other logs</p>